



# OSU Energy Management Program

## FY2016 Report

September 2016

Summary of System-wide Cost Avoidance for FY2016.  
Includes Update for FY2016 Q4 and Program Goals.



## FY16 Program Successes

### OSU System

- The Energy Management Program for the OSU System was recognized by Sustainable Tulsa as its 2016 Henry Bellmon Sustainable Economic Growth award winner.

### OSU Tulsa

- An adjunct faculty member changed her class format to accommodate the HVAC shut down of an entire wing of a building, thereby directly reducing energy consumption.
- This is an excellent example of the culture of conservation at OSU-Tulsa and CHS.

### OSUIT - Okmulgee

- Stan Teague was recognized by PSO as the Energy Manager of the Year for Oklahoma.
- Because of OSU-IT's success in PSO's Peak Performers program, it was awarded a rebate of just over \$15,000.
- The OSU-IT campus also reached \$1M in savings in FY2016.

### OSU Stillwater

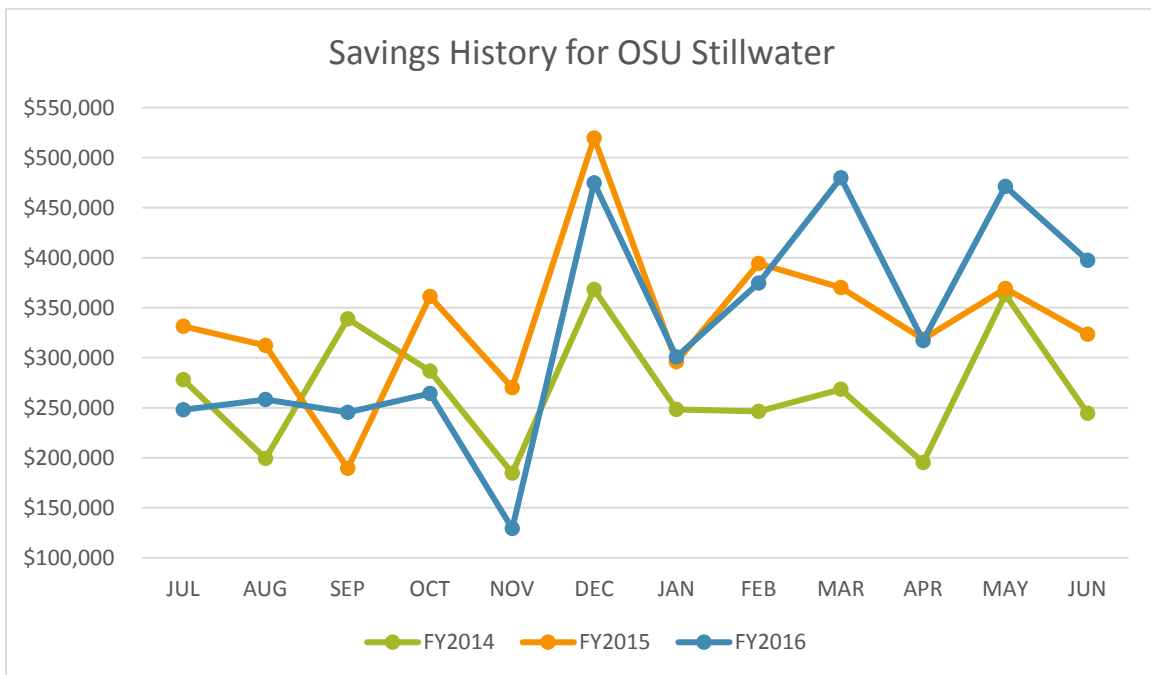
- For FY2016, Stillwater increased its monthly savings goal from \$267K per month to \$300K per month. This new savings goal was exceeded 7 consecutive months with a peak of nearly \$480,000 in March 2016.
- Renewed focus in working with Athletics has helped increase monthly savings. This has been a large part of the monthly savings goal success.

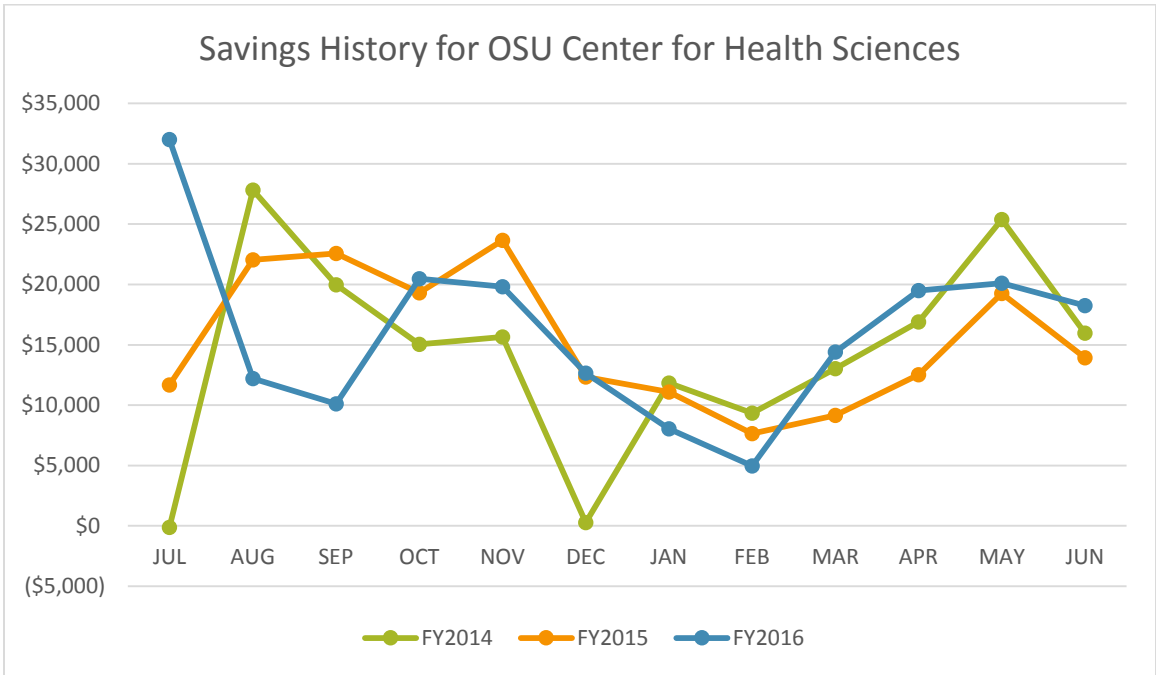
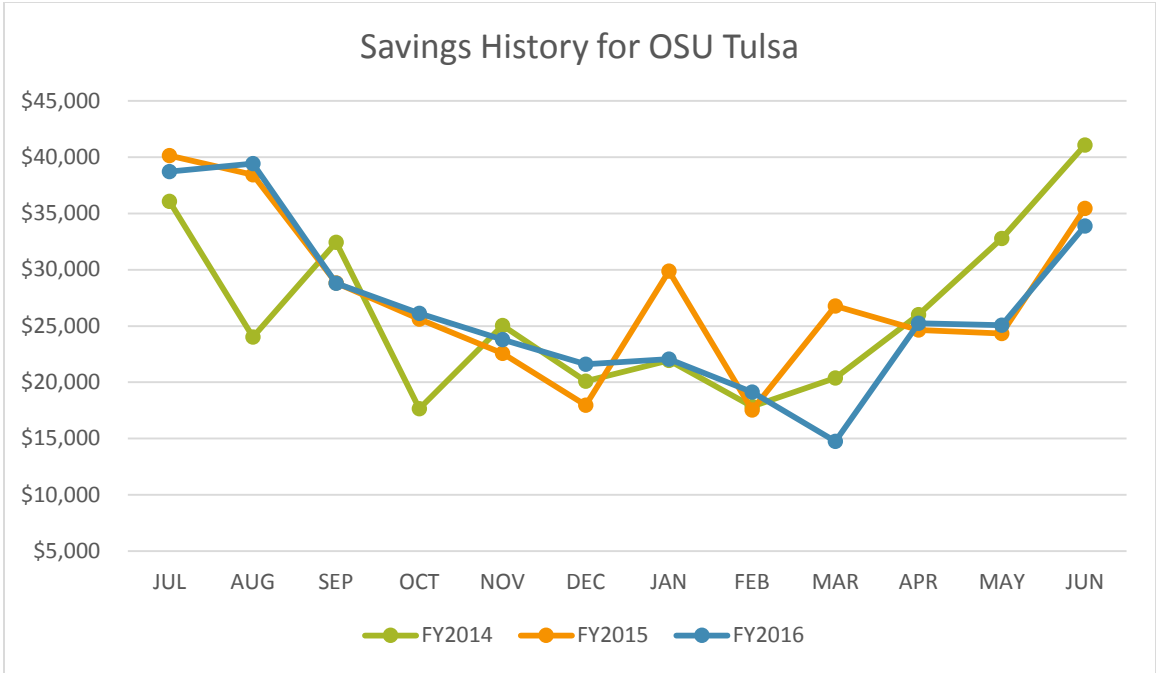
# Program Savings and Progress for Fiscal Year 2016

System-wide Savings (July 2015 – June 2016)		
OSU – Stillwater	\$3,961,367	14.5%
OSU – Oklahoma City	\$242,357	25.9%
OSU – Tulsa Campus	\$318,664	28.4%
OSU Tulsa – Center for Health Sciences	\$192,572	18.1%
OSU IT – Okmulgee	\$272,502	23.9%
<b>Total Savings (12 months)</b>	<b>\$4,987,462</b>	<b>15.8%</b>
Percent Savings Based on CY 2006 Baseline		

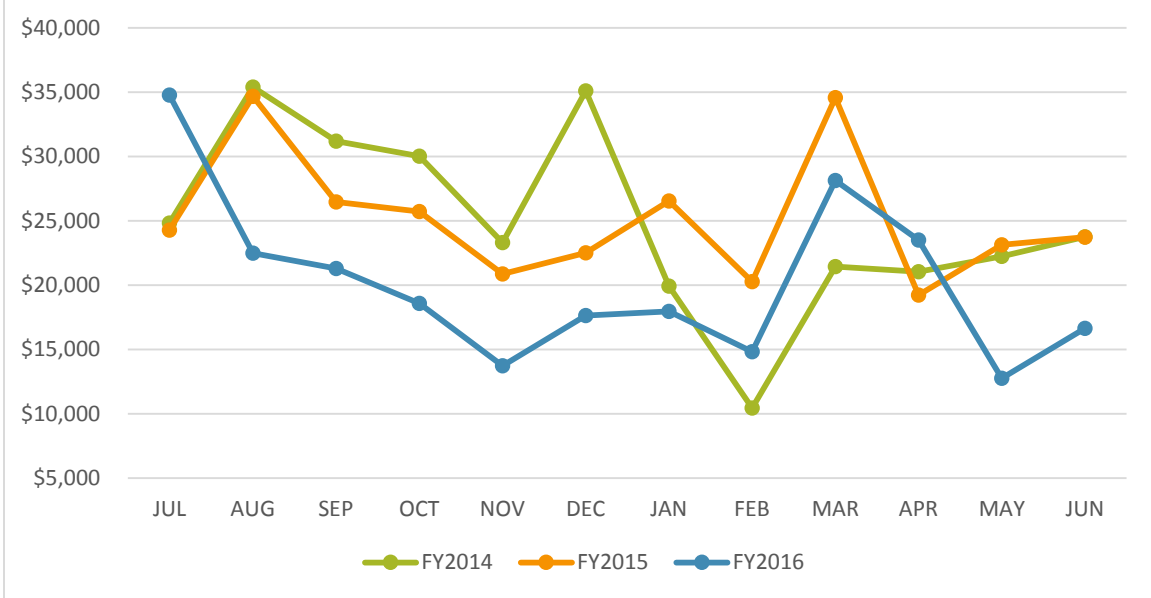
System-wide Savings (July 2007 – June 2016)		
OSU – Stillwater	\$30,702,276	15.2%
OSU – Oklahoma City	\$2,080,752	25.5%
OSU – Tulsa Campus	\$2,286,361	24.2%
OSU Tulsa – Center for Health Sciences	\$1,884,780	25.8%
OSU IT – Okmulgee	\$1,629,394	15.5%
<b>Total Savings (Program To-Date)</b>	<b>\$38,583,563</b>	<b>16.3%</b>

## Program Savings and Progress Last 12 Months

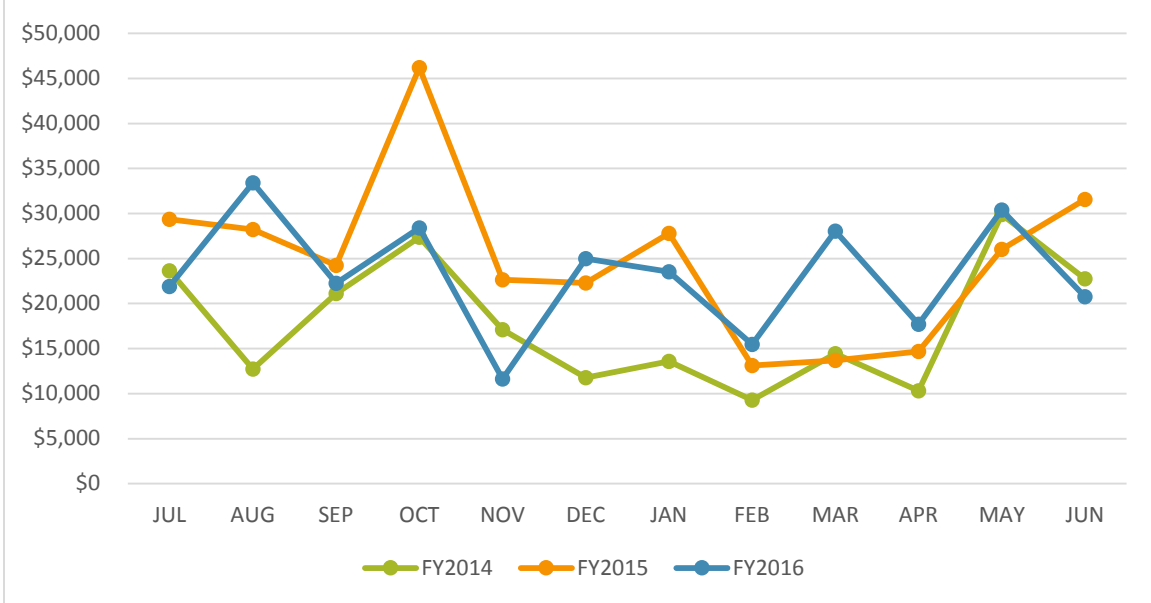




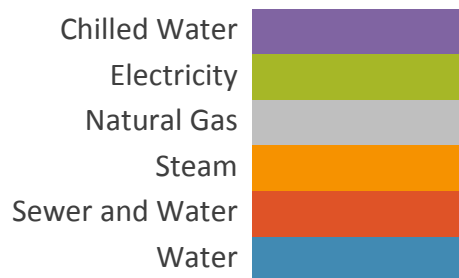
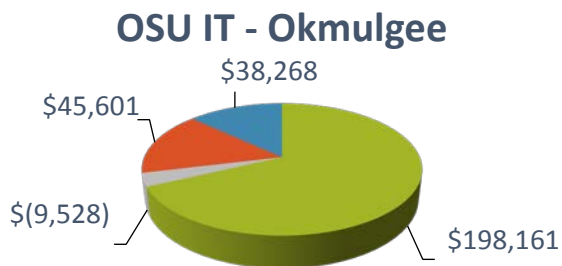
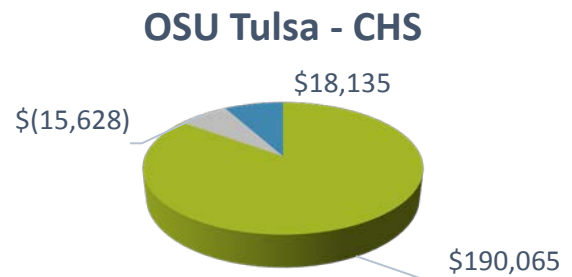
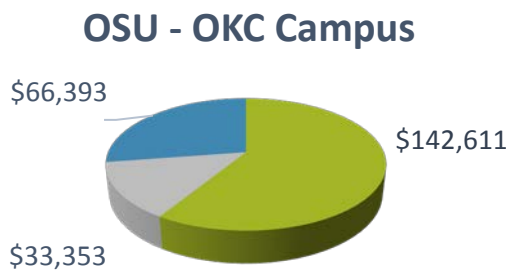
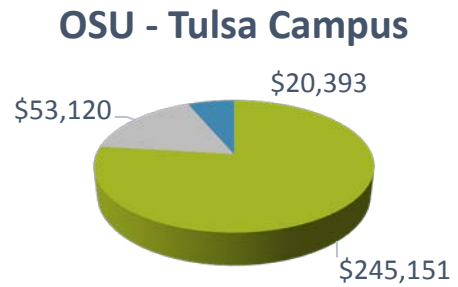
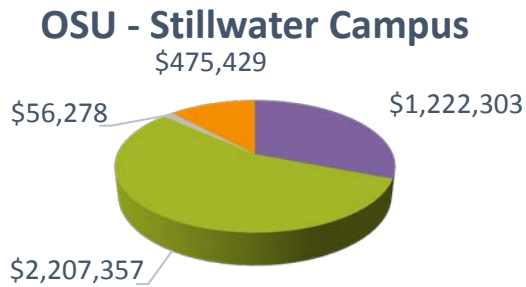
### Savings History for OSU Oklahoma City



### Savings History for OSU Okmulgee

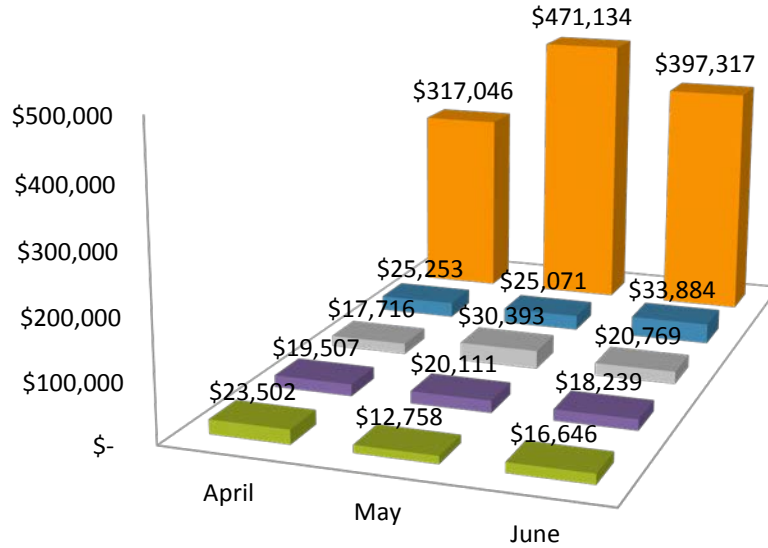


# Program Savings by Campus and Commodity for FY2016

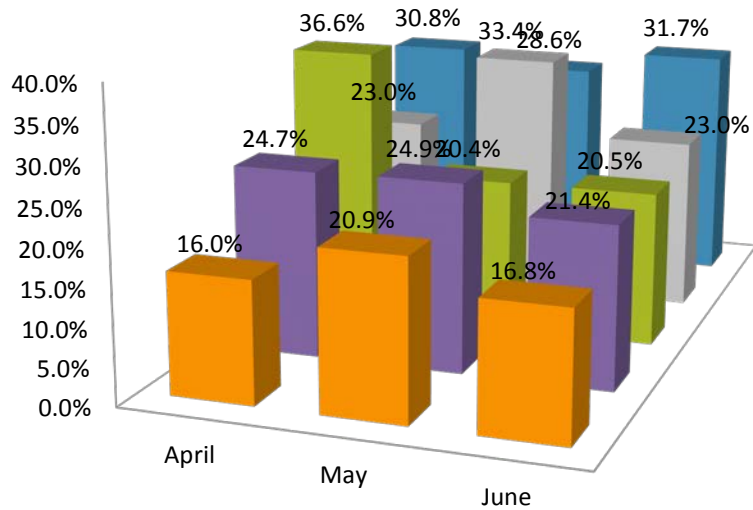


# FY2016 Q4 Cost Avoidance

## Savings Dollars and Percent Cost Avoidance



■ Oklahoma City 
 ■ Tulsa - CHS 
 ■ Okmulgee 
 ■ Tulsa Campus 
 ■ Stillwater



■ Stillwater 
 ■ Tulsa - CHS 
 ■ Oklahoma City 
 ■ Okmulgee 
 ■ Tulsa Campus

## Program Savings and Progress Last 12 Months OSU Stillwater Campus Only

